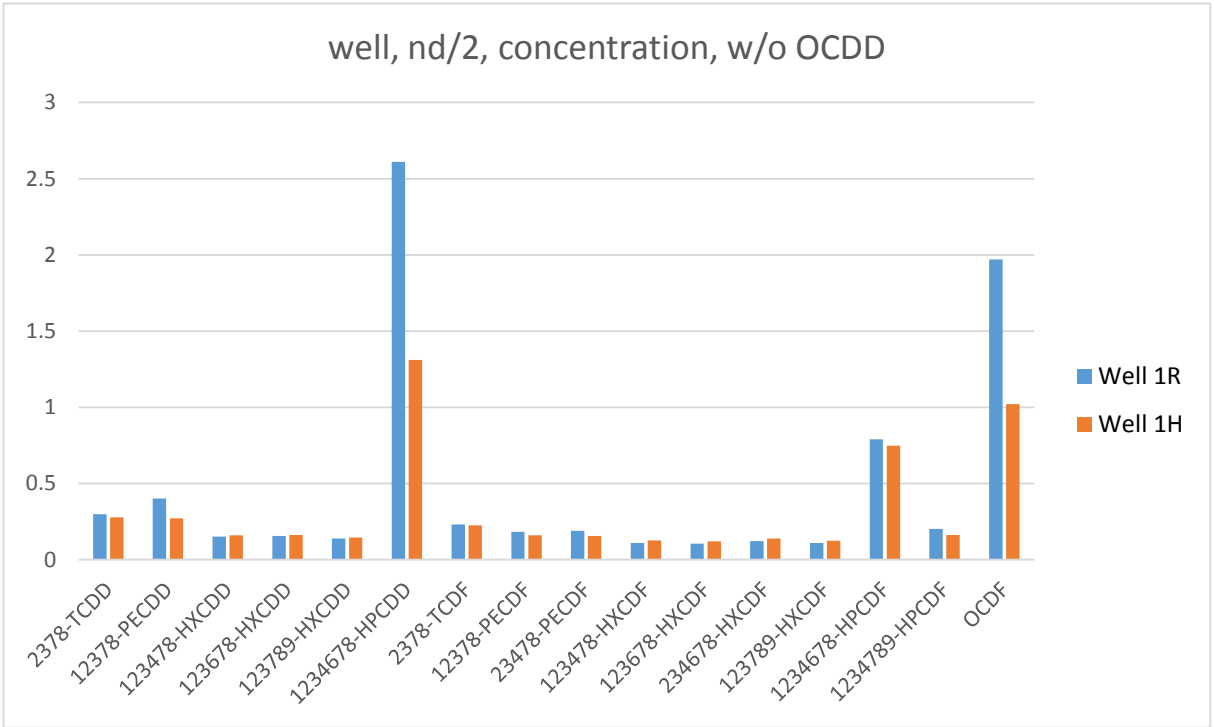
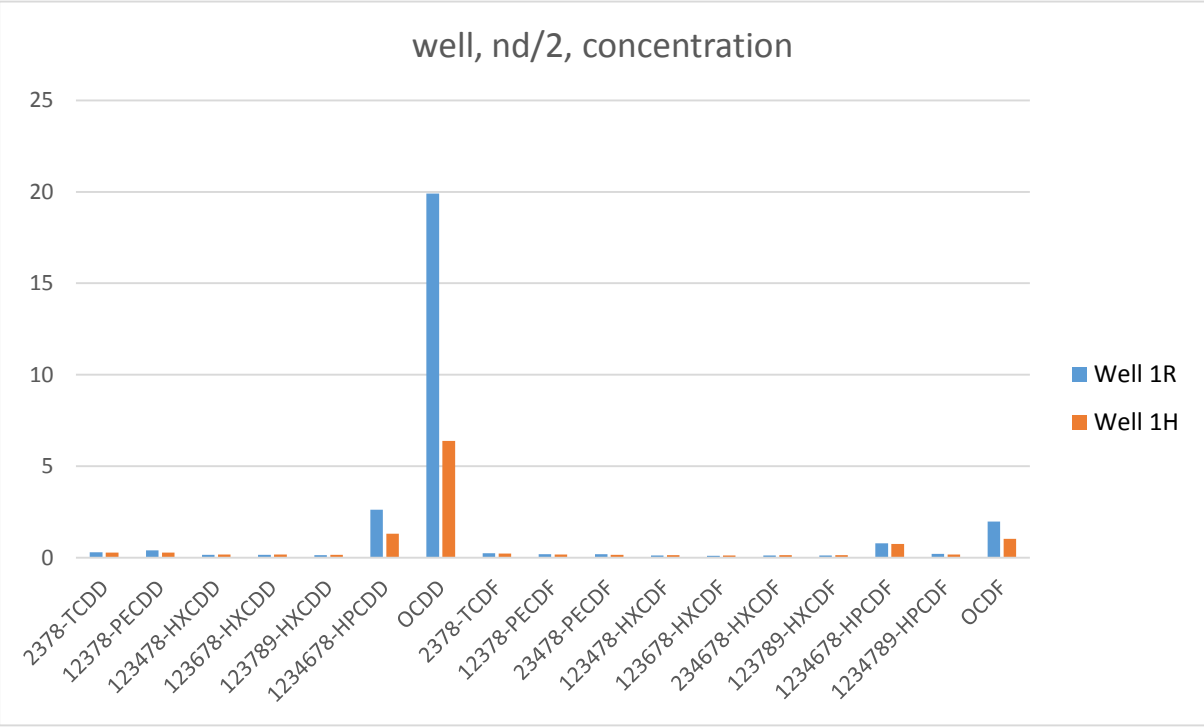


Private Water Well Concentrations
(data provided by the
San Jacinto River Coalition)

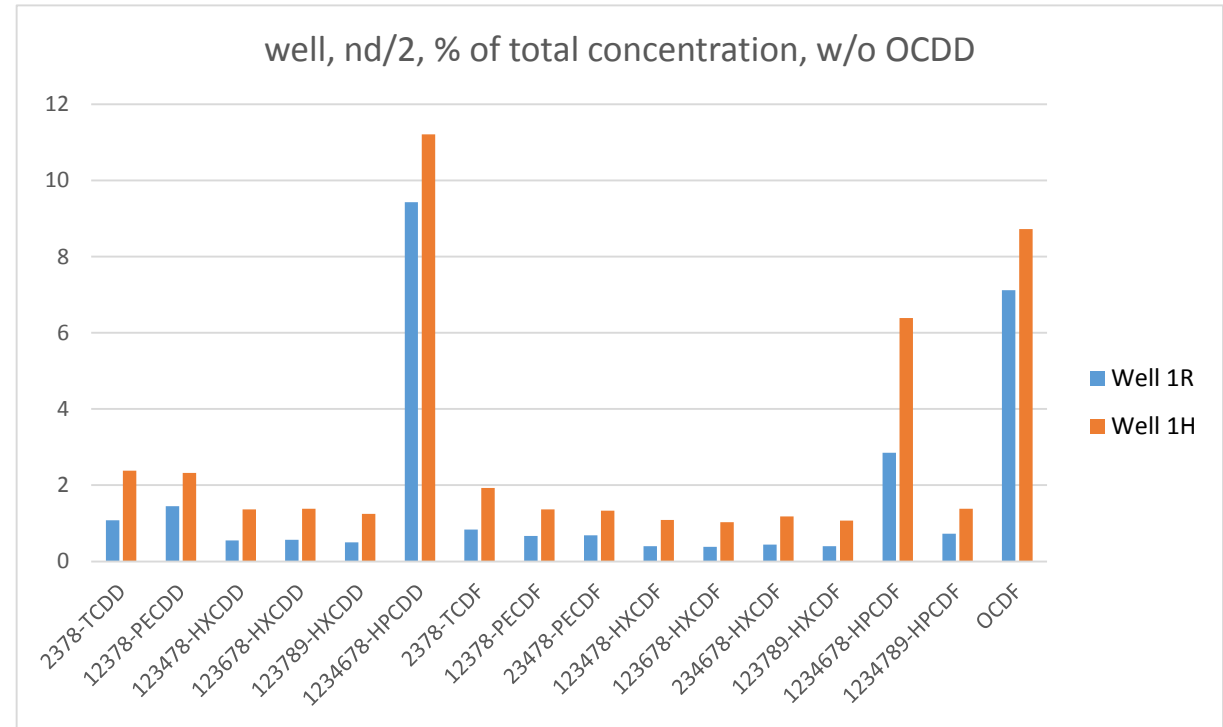
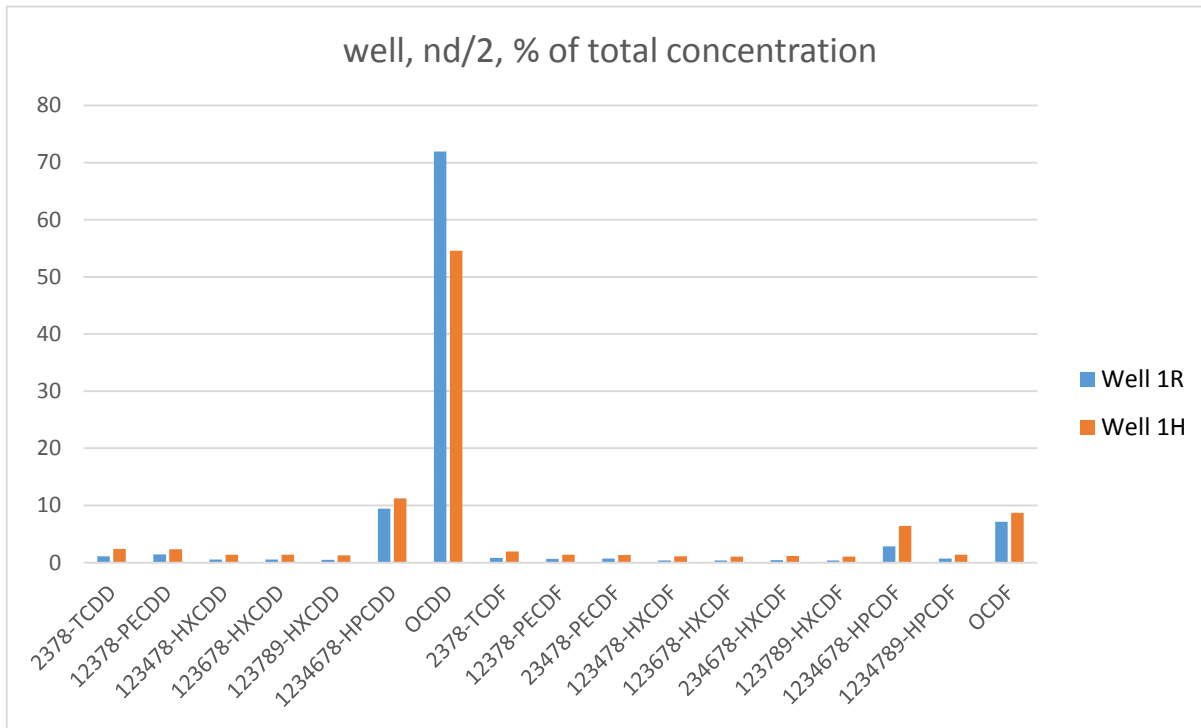
shown as percent of total concentration

Private well water concentrations (data provided by the San Jacinto River Coalition)



The two wells are virtually identical except Well 1R is higher in 1234678-HpCDD and OCDF
 nd/2 = non-detects as half the detection limit
 w/o OCDD = OCDD concentrations removed from analysis

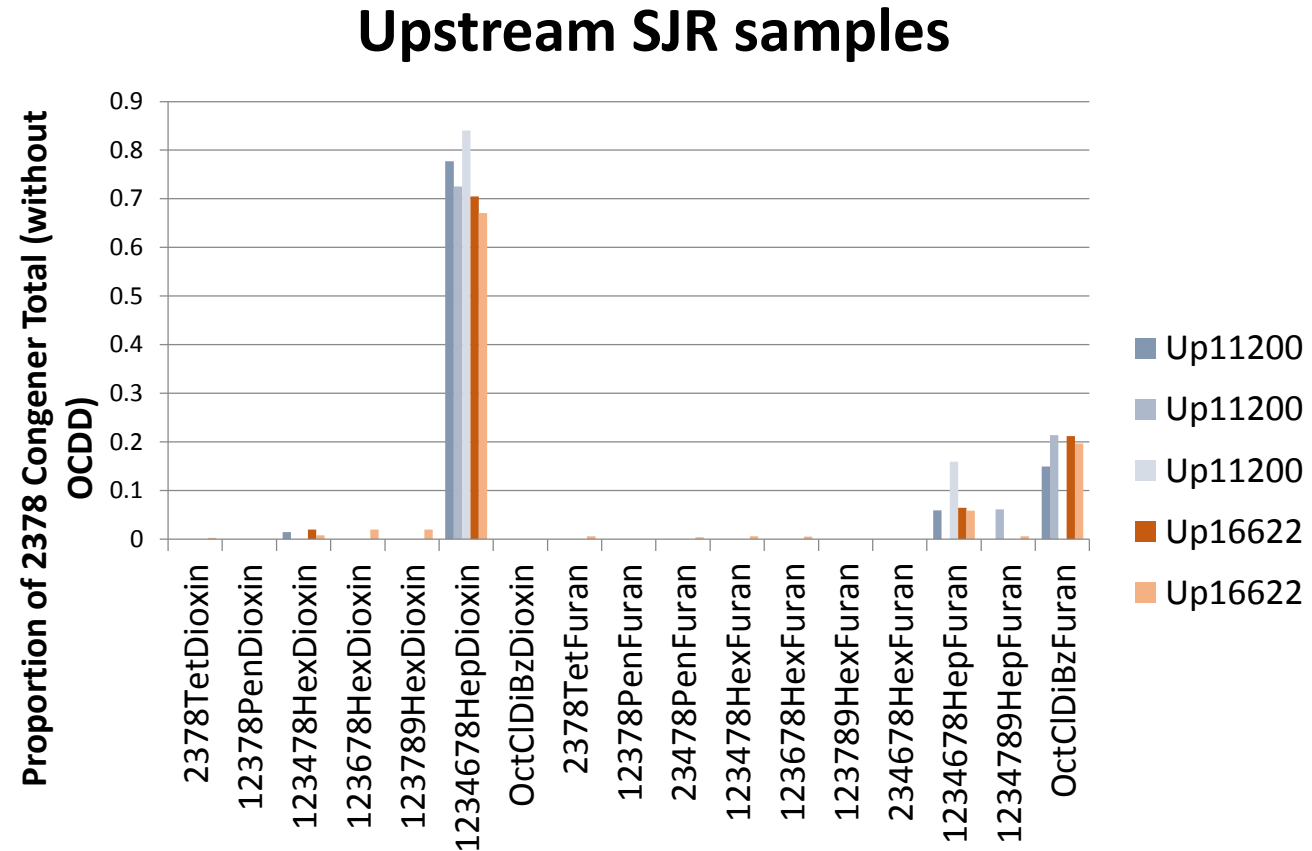
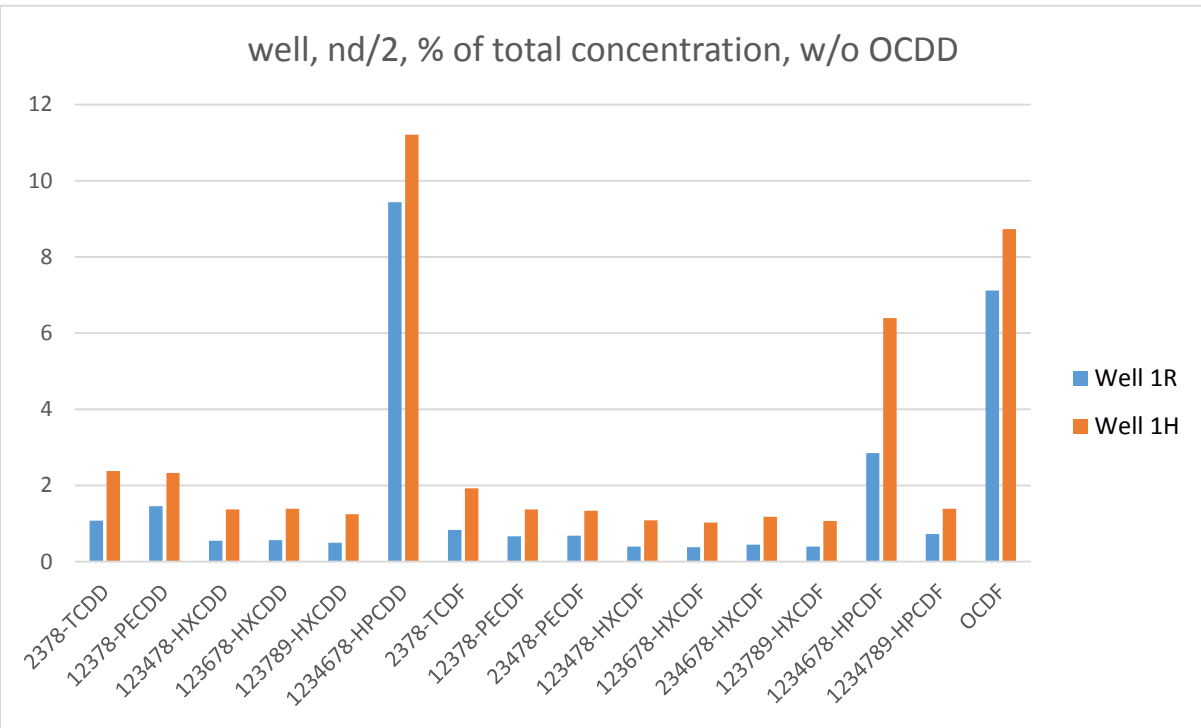
Private well water concentrations (data provided by San Jacinto River Coalition). Shown as percent of total concentration



nd/2 = non-detects as half the detection limit
w/o OCDD = OCDD concentrations removed from analysis

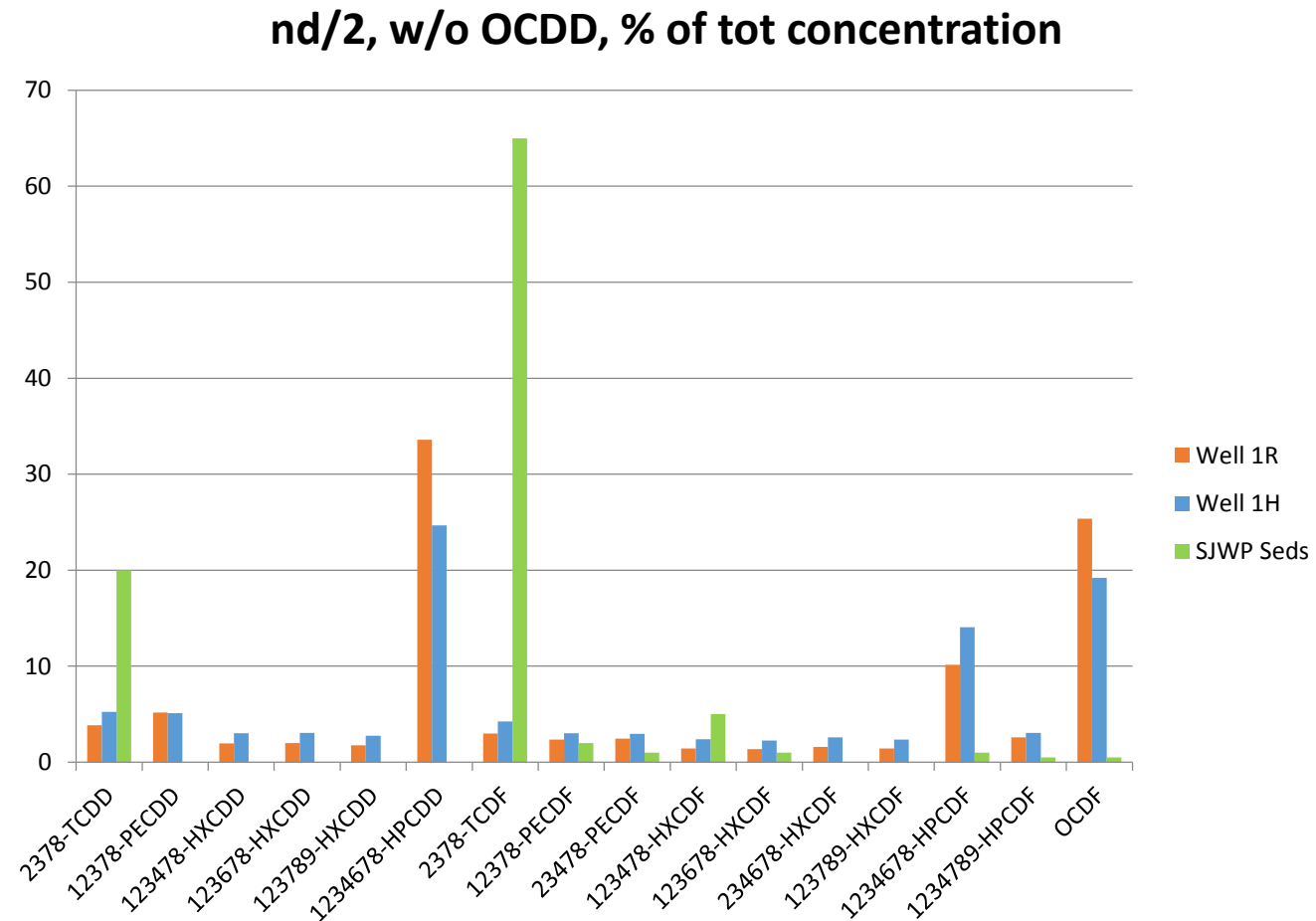
** these well water fingerprints (without OCDD) look very much like the fingerprint from upstream (reference sediments (see next slide). These well water fingerprints do not resemble the SJWP sediment fingerprint at all (see slide 5 and 6)

Private well water fingerprint compared to upstream (reference) sediment fingerprint



nd/2 = non-detects as half the detection limit
w/o OCDD = OCDD concentrations removed from analysis

Private well water fingerprint compared to SJWP sediment fingerprint



nd/2 = non-detects as half the detection limit

w/o OCDD = OCDD concentrations removed from analysis