

What You Need to Do

- Never discharge raw sewage in Clear Lake or Galveston Bay
- Use restrooms on shore.
- Always pump out using approved devices.
- Underway, use approved Marine Sanitation Devices (MSDs).
- Established a regular maintenance schedule for your MSD.
- Use enzyme-based products to control odor and reduce solids in holding tanks.
- Avoid holding tank products that contain quaternary ammonium compounds and formaldehyde.
- Learn about environmentally safe products and practices.
- Share this information with other boaters.
- Encourage boating facilities to provide trashcans, recycling bins and pumpout stations.
- Support marinas that are environmentally responsible.



The mission of the Galveston Bay Foundation is to preserve, protect and enhance the natural resources of the Galveston Bay estuarine system and its tributaries for present users and for posterity.

The Foundation was incorporated in 1987, and is a non-profit organization under Section 501 (C)(3) of the Internal Revenue Service Code.



A PROGRAM OF THE TCEQ



Galveston Bay Foundation

17330 Highway 3
Webster, TX 77598
281-332-3381
www.galvbay.org



A Pump-out Guide for Clear Lake Boaters

Enjoy a Healthy Bay!



www.galvbay.org

Funding for this project is provided by the Texas Commission on Environmental Quality, Galveston Bay Estuary Program, and U.S. Environmental Protection Agency. Graphic design work for this brochure was generously provided by Jenobi, Inc. Special thanks to the Clean Texas Marina Program and Texas Sea Grant for providing the information for this publication.

What You Need to Know

Sewage waste discharged from boats degrades water quality by introducing disease-causing microorganisms into the marine environment and depressing oxygen. This can result in fish kills and rendering the water unsuitable for swimming and recreational use.

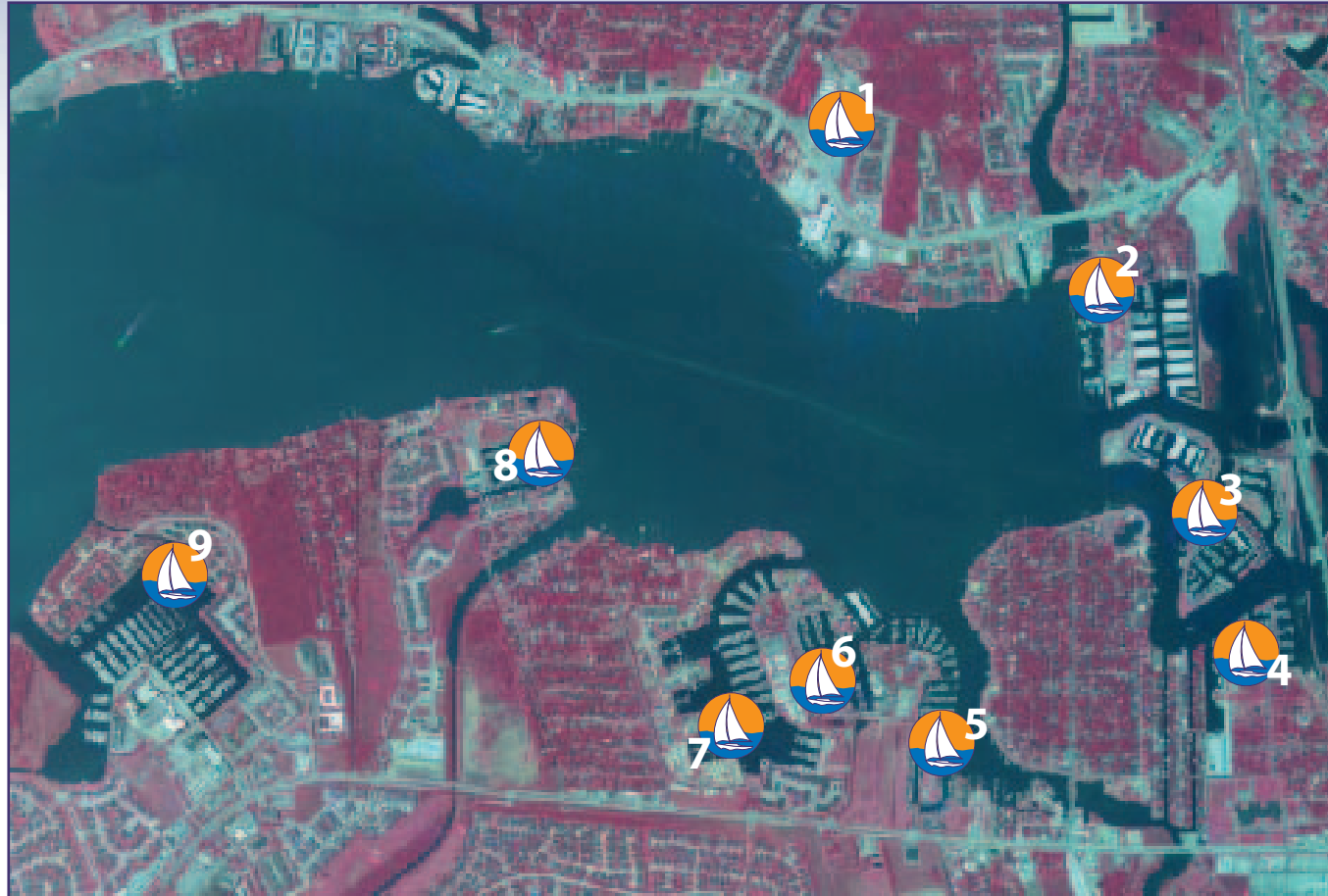
Both Clear Lake and Galveston Bay are "No Discharge Zones". Violators can be penalized by direction of the Texas Water Code up to \$500 per day, per violation.



Where You Need to Go

Marinas in Clear Lake with Pump-out Stations

1) Endeavour Marina	832-864-4000	7) Waterford Harbor Marina	281-334-4440
2) Lakewood Yacht Club	281-474-2511	8) Marina Del Sol	281-334-3909
3) Seabrook Shipyard	281-474-2586	9) South Shore Harbor	281-334-0515
4) Portofino Harbour	281-334-6007		
5) Legend Point	281-334-3811	Maritime Sanitation	
6) Watergate Yachting Center	281-334-1511	(Mobile Pump-out Service)	281-334-5978



Aerial image courtesy of 2004 National Agriculture Imagine Program, Texas Natural Resources Information System.